

# i00

i00 | PROJECT i00



**COMFORT**  
WORKSPACE



# **i00**

## **CONTENTS**

**ADVANCED ENGINEERING 5**

**FOCUS ON:**

**i00 7**

**PROJECT i00 9**

**FUNCTIONS & FEATURES 10**

**MODELS & OPTIONS 12**

**UPHOLSTERY 14**

**TECHSPEC 16**

**DIMENSIONS 18**







PROJECT



## i00 ADVANCED ENGINEERING

i00 takes ergonomic comfort to new levels. With exceptional back support, the i00 has been developed to fit and support the body and spine, allowing the user to stay comfortable for long periods.

The user's upper and lower back regions are fully supported by our most advanced and unique lumbar system to date, encouraging the user to maintain a healthy posture.

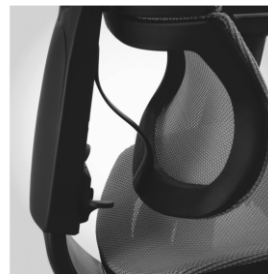
Style, simplicity and ease of use help make i00 a market-leading chair. The patented single lever control combined with stunning frame finish options - such as a white and polished aluminium frame and a choice of mesh, foam or zero-pressure seat styles, make i00 a versatile and ideal choice for any office environment.







# CONCEPTION i00SMART



## OVERVIEW:

An intuitive single lever control operates the three most frequently used chair functions – seat height, seat depth and back tilt can all be operated from a single point of contact.

The automatic, flexible lumbar support system provides full support to the lower back region with interactive and dynamic movement, intuitively adjusting to your needs.

The design concept of the i00 chair also offers two styles of multi-directional interactive cranial support which can help to relax tired neck and shoulder muscles.

Using up to 60% recycled material, the i00 also boasts 98% recyclability, has Greenguard Gold Indoor Air Quality Certification and meets EN 1335-2:2009 and EN 1335-3:2009.

## FEATURES:

### TENSION CONTROL

ALUMINIUM DETAILING

BLACK OR WHITE FRAME OPTIONS

### SINGLE LEVER CONTROL

TWIN PIVOT CONTROL MECHANISM

DUAL SPRING TECHNOLOGY

SEAT SLIDE

### 3D HEAD REST

WATERFALL FRONT SEAT

### AUTOMATIC 3D LUMBAR SUPPORT

LOCKING HEIGHT, ANGLE, WIDTH AND DEPTH

ARMREST ADJUSTMENTS

OPTIONAL HEADRESTS WITH HEIGHT, TILT AND ANGLE ADJUSTMENT OR FLEXIBLE, MULTI-DIRECTIONAL SUPPORT

ALL PARTS OF THE CHAIR ARE REPLACEABLE AND KEPT IN STOCK FOR LONGER LIFE-CYCLE

Build your own unique i00 chair using a combination of mesh, fabric and leather finishes at [comfort.global/create](http://comfort.global/create)

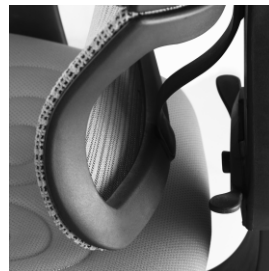








# PROJECT i00



## OVERVIEW:

The beauty of Project i00 lies in its simplicity. Designed to be one of the most intuitive chairs on the market, it delivers superb ergonomic value and flexibility - suitable for all users and the perfect solution for large organisations and for agile working environments.

The single lever provides the user full control of the chair's features in four simple movements. This allows fast set-up and automatic adjustment to suit the weight of any user.

The built-in flexible lumbar support system delivers full support to the lower back region with interactive and dynamic movement, intuitively adjusting to the user's needs.

## FEATURES:

FULLY AUTOMATIC **WEIGHT BALANCE MECHANISM**

**SINGLE LEVER TECHNOLOGY** ACTIVATING HEIGHT, SEAT DEPTH AND BACK LOCK ADJUSTMENT

INTEGRATED AUTOMATIC **3D LUMBAR SUPPORT**

SEAT SLIDE

WATERFALL FRONT SEAT

**3D HEAD REST**

LOCKING MULTI-FUNCTIONAL ARMS WITH SOFT-TOUCH PADS - REMOVABLE WITHOUT AFFECTING CHAIR STYLING

OPTIONAL POLISHED BASE

BLACK RAISED NYLON BASE WITH 60 MM CASTORS

ALL PARTS OF THE CHAIR ARE REPLACEABLE AND KEPT IN STOCK FOR LONGER LIFE-CYCLE

Build your own unique Project i00 chair using a combination of mesh, fabric and leather finishes at [comfort.global/create](http://comfort.global/create)

# 10 **i00** **SEATING INNOVATION FEATURES**

For a full technical specification, please see page 16-18.

## **OPTIONAL HEADREST**

Available as a fixed multi-directional 3D headrest which can be tilted and height-adjusted to suit the user's individual requirements, or a flexible MD height-adjustable headrest which moves dynamically to offer the user constant cranial support.

## **BACK HEIGHT**

Raise or lower the chair's back to support the user's back and lumbar region.

## **LUMBAR SUPPORT**

The i00 boasts a patented lumbar system which, unlike traditional chairs, delivers comprehensive lumbar coverage and unrivalled support in every recline position. This promotes a more natural pelvic alignment and helps reduce musculoskeletal complications.

A pre-tensioned connector provides resistance to the user's lower back which varies with seating positions.

## **SEAT HEIGHT**

Raise or lower the chair's seat height to fit the individual user's anthropometric measurements.

## **SEAT SLIDE**

This feature allows depth adjustment of the seat to accommodate the length of the user's thighs.

## **SINGLE LEVER CONTROL MECHANISM** (i00)



Easy-to-use single lever control operates the seat height, depth, and back tilt functions.

## **TWIN-PIVOT MECHANISM**

This patented dual pivot technology offers more movement and constant support with minimal pressure on the underside of the thighs (first pivot point is located behind the user's knees and the second point under the ischial tuberosities). This encourages continuous supported body movement, therefore increasing blood circulation and reducing fatigue. An additional lock allows the user to recline in a range of positions.

Dual spring engineering helps find the perfect resistance for their weight, and delivers a smooth and comfortable recline action.

## **FIVE STAR BASE**

A choice of three aluminium five-star bases in polished, white or black finish. Project i00 comes as standard with a black nylon base.



### AUTOMATIC TENSION WEIGHT BALANCE MECHANISM



When recline, the mechanism can adjust automatically the back-tilt tension according to each user's body weight to provide suitable tension. Each user does not need to adjust the tension by manual.

### SEAT SLIDE

This feature allows depth adjustment of the seat to accommodate the length of the user's thighs.

### ARMRESTS

Soft touch pads on removable 3D multifunctional armrests with 6 point height, depth and angle adjustment.

### ENHANCED WATERFALL FRONT / SEAT PRESSURE REDUCTION

The rounded front seat is designed to reduce pressure points on the underside of user's thighs. In addition, foam panels surround both front and sides of the seat for greater pressure distribution.



PROJECT

### ARMRESTS (i00)

Height (8 positions lock), width, angle and depth adjustable to allow forearms to rest comfortably whilst taking the weight off the shoulders.

### ENHANCED WATERFALL FRONT / SEAT PRESSURE REDUCTION

The rounded front seat is designed to reduce pressure points on the underside of user's thighs. In addition, foam panels surround both front and sides of the seat for greater pressure distribution.

### TENSION CONTROL (i00)

Adjusts back tension to allow the back to tilt comfortably supporting the user's body weight when reclining.



# 12 i00 MODELS & OPTIONS

i00 is designed for both aesthetic impact and ergonomic excellence. An extensive selection of soft and durable mesh, leather and fabric upholstery offers a variety of colour combinations to suit any environment. This stylish chair delivers outstanding ergonomic comfort and stylish innovation – the perfect example of form and function in complete harmony.

For complementary visitor seating, see Comfort's Lii visitor chair.

## MODELS



**i00 WHITE & POLISHED  
MD HEADREST**



**i00 BLACK  
3D HEADREST**



**PROJECT  
i00 (NYLON BASE)**

## HEADREST OPTIONS



**WHITE  
MD HEADREST**



**BLACK  
MD HEADREST**



**WHITE  
3D HEADREST**



**BLACK  
3D HEADREST**

## BASE OPTIONS



**POLISHED**



**NYLON**



## UPHOLSTERY OPTIONS



**MESH**  
HEADREST,  
BACK & SEAT



**MESH**  
HEADREST & BACK,  
FABRIC ZERO PRESSURE SEAT



**MESH**  
HEADREST & BACK,  
FABRIC STANDARD SEAT



**MESH**  
HEADREST & BACK,  
LEATHER SEAT



**MESH**  
BACK & SEAT



**MESH BACK,**  
FABRIC ZERO PRESSURE SEAT



**MESH BACK,**  
FABRIC STANDARD SEAT



**MESH BACK,**  
LEATHER SEAT

Other combinations are available.

Build and download your own design using our chair configurator at  
[www.comfort.global/create](http://www.comfort.global/create)

## ADDITIONAL OPTIONS



**WHITE LEGREST\* / NOTEBOOK STAND\*\* / POLISHED GLIDES**  
\*\*NOTEBOOK & \*LEGREST NOT AVAILABLE ON PROJECT i00

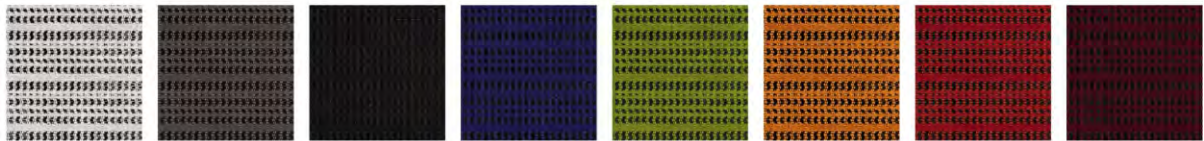


**BLACK LEGREST\* / POLISHED GLIDES**  
\*LEGREST NOT AVAILABLE ON PROJECT i00

# 14 i100 UPHOLSTERY

Comfort are passionate about using mesh on our chairs due to their durability and ergonomic properties. In addition, we have selected a range of complementary leathers and fabrics to mix-and-match. Should you wish to upholster in an alternative material, we work with all the leading contract fabric suppliers and can advise of suitability – non stock items will increase lead times.

## KMD MESH



WHITE  
KMD36

GREY  
KMD30

BLACK  
KMD31

BLUE  
KMD35

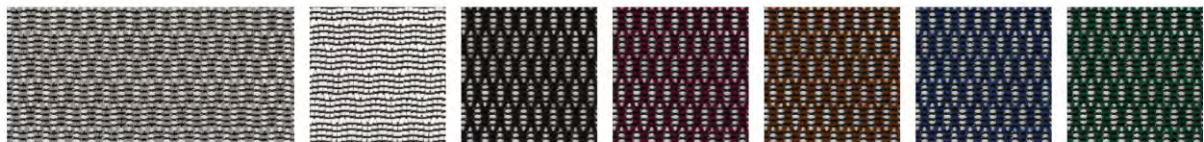
GREEN  
KMD34

ORANGE  
KMD33

RED  
KMD32

BURGUNDY  
KMD37

## W MESH



GREY  
W09-53

WHITE  
W09-24

BLACK  
W09-01

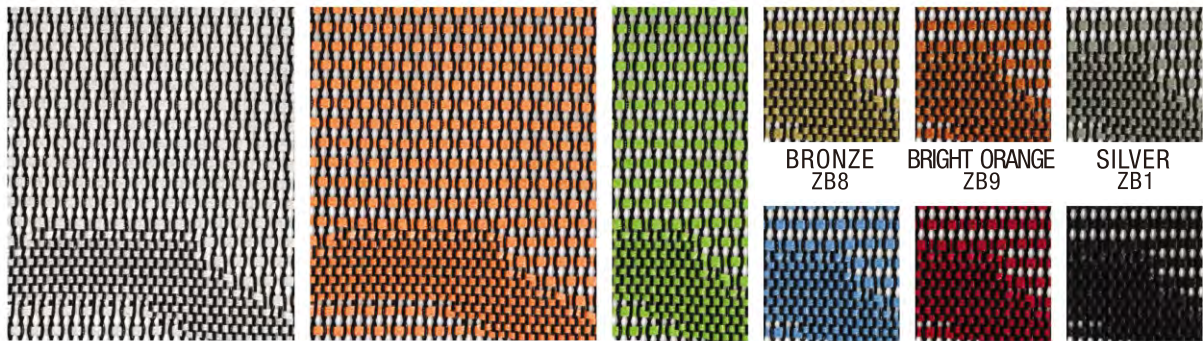
RED  
W09-10

ORANGE  
W09-51

BLUE  
W09-18

GREEN  
W09-19

## ZB MESH



WHITE  
ZB7

TANGERINE  
ZB4

HERBAL GREEN  
ZB3

BRONZE  
ZB8

BRIGHT ORANGE  
ZB9

SILVER  
ZB1

SKY BLUE  
ZB5

RED  
ZB6

BLACK  
ZB2

## LEATHER



SAFRAN  
LE3902

LATTE  
LE7810

DARK BROWN  
LE8213

RED  
LE3310

RED ORANGE  
LEH007

BLACK  
LE2095

SNOW  
LEA2

HUNTER GREEN  
LE197

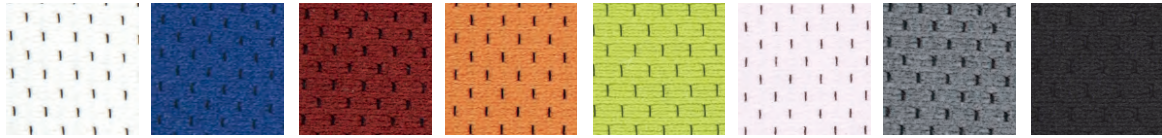
SKY BLUE  
LE196

INDIGO  
LE1118

DARK BLUE  
LE70091



## FA (FABRIC)



BEIGE  
A24301

BLUE  
A24326

RED  
A24305

ORANGE  
A24335

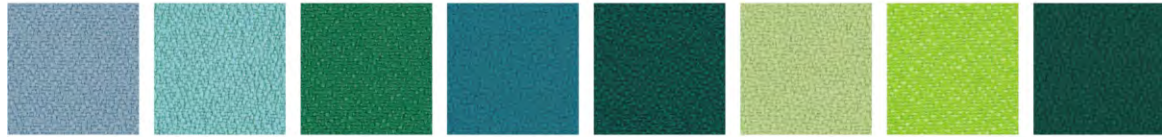
GREEN  
A24314

PINK  
A24375

GREY  
A24307

BLACK  
A24337

## CAMIRA XTREME (FABRIC)



ORCHILLA  
YS167

CAMPECHE  
YS074

LOMBOK  
YS159

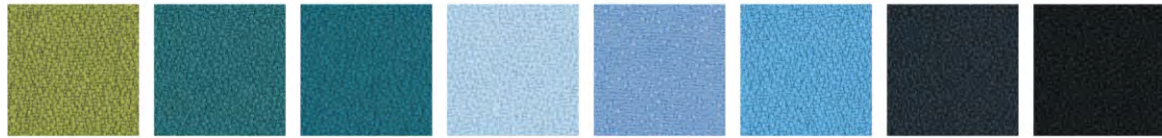
TONGA  
YS160

FLORES  
YS161

APPLE  
YS096

MADURA  
YS156

TABOO  
YS045



APPLEDORE  
YS077

WINDJAMMER  
YS047

MONTERRAT  
YS011

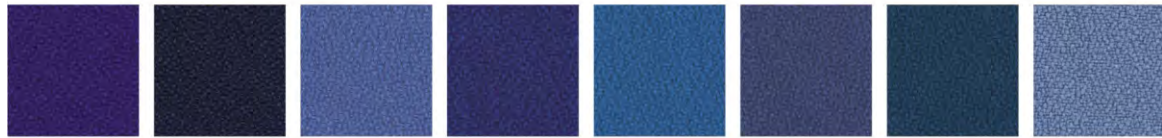
ARECIBO  
YS174

MARIANNA  
YS157

PARASOL  
YS073

ARAWAK  
YS016

HAVANA  
YS009



NAVASSA  
YS162

LEEWARD  
YS164

BLUEFIELD  
YS021

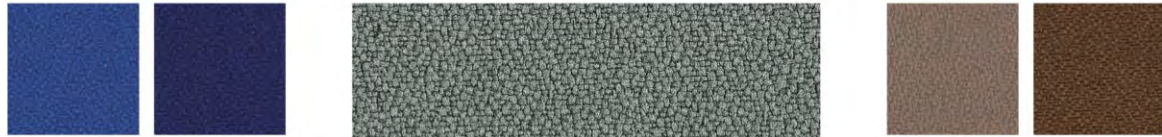
OCEAN  
YS100

SCUBA  
YS082

CAYMAN  
YS024

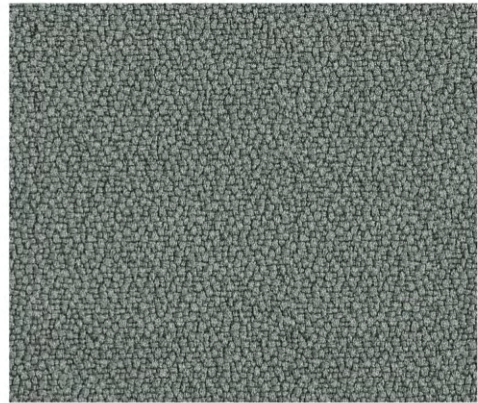
COSTA  
YS026

MARTINIQUE  
YS004



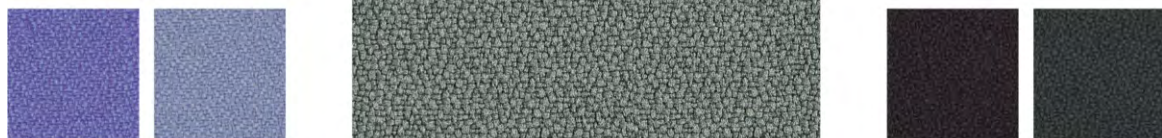
HONEYMOON  
YS035

CURACAO  
YS005



XTREME IS A CREPE WEAVE FABRIC  
MADE FROM 100% RECYCLED MATERIAL.  
(BLIZZARD - YS081 SHOWN)

PLEASE CONTACT CAMIRA FOR SWATCH OR SAMPLES.



BLUEBELL  
YS097

ANGUILLA  
YS169



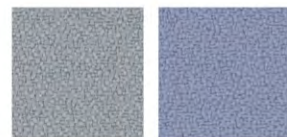
BOUNTY  
YS086

SOMBRERO  
YS046



SLIP  
YS094

OSUMI  
YS171



BURU  
YS170

STEEL  
YS095



BONAIRE  
YS172

KRABI  
YS141

BLIZZARD  
YS081

RHUM  
YS173

PADANG  
YS145

TWISTER  
YS083

BRIDGETOWN  
YS102

MAUVE  
YS069



TAROT  
YS084

ANDAMAN  
YS144

TOBAGO  
YS030

CALYPSO  
YS106

TOKARA  
YS136

PANAMA  
YS079

BELIZE  
YS105

DIABLO  
YS101

# 16 i100 TECHSPEC

	i100	PROJECT i100
<b>GREEN CREDENTIALS</b>		
<b>GREENGUARD CERTIFICATION</b>	<b>GOLD</b>	<b>GOLD</b>
GREENGUARD Certification standards have established performance-based standards to define products and processes with low chemical and particle emissions for use indoors.		
<b>RECYCLABILITY</b>	<b>98%</b>	<b>95.1%</b>
<b>MATERIAL ANALYSIS</b>	<b>CONTECT RECYCLE</b>	<b>CONTECT RECYCLE</b>
PLASTIC	<b>41.5%</b> 90%	<b>52.8%</b> 90%
ALUMINUM ALLOY	<b>31.2%</b> 10%	- -
STEEL	<b>22.4%</b> 80%	<b>42.3%</b> 80%
UPHOLSTERY	<b>2.7%</b> -	<b>1.4%</b> -
PU/FOAM	<b>2.1%</b> -	<b>3.3%</b> -
<b>RECYCLED MATERIAL TOTAL</b>	<b>58.5%</b>	<b>81.3%</b>
<b>CERTIFICATION</b>		
<b>EN 1335</b>		<b>YES</b>
-1:2000	<b>YES</b>	<b>YES</b>
-2:2009	<b>YES</b>	<b>YES</b>
-3:2009		
Office furniture. Office work chair. Safety requirements.		
<b>EN 5459-2:2008</b>	<b>YES</b>	
Specification for performance requirements and tests for office furniture Office pedestal seating for use by persons weighing up to 150kg and for use up to 24 hours a day, including type-approval tests for individual components.		







# 18 i00 DIMENSIONS

## DIMENSIONS i00



mm

A	435-475
B	470-560
C	510
D	655-775
E	440-478
F	645
G	(3D)100-174 (MD)110-185

## DIMENSIONS PROJECT i00



mm

A	435-475
B	455-545
C	500
D	675-775
E	490
F	650
G	(3D)95-170 (MD)110-185



# COMFORT WORKSPACE



## DELIVERING ERGONOMIC SEATING SOLUTIONS

As Asian most dynamic manufacturer, Comfort Workspace focus on high end ergonomic chairs in the past over 20 years. Comfort continues to go from strength to strength in the competitive commercial seating and office furniture market

We create better working environments by providing the ultimate in comfort and posture control with our range of ergonomic chairs – a revolution in office comfort



## INTELLIGENT & TECHNOLOGICAL MANUFACTURING

Intelligent & Technological Manufacturing bring great revolutions for global office chairs factories

The Following certifications from left to right are

- 1.Green Building Evaluation Certificate
- 2.Certification for Materials Recyclable Percentage
- 3.International Certificate for Supplier Ethical & Social Commitment
- 4.European Union Furniture Institute Certification for Dimensions and Safety
- 5.American National Furniture Institute Certification for Safety, Strength and Durability
- 6.International Authoritative Certificate for Indoor Air Quality
7. European Union Certificate for Restriction and Evaluation of High Concern Chemicals



